



AUTOMOTIVE ACCESSORY
MANUFACTURE & DISTRIBUTION

AIRPLEX INDUSTRIES LTD
21 Saleyards Road, Otahuhu, Auckland 1062, New Zealand
PO Box 11286, Ellerslie, Auckland 1542 New Zealand
PH +64 (9) 276-9826 Fax +64 (9) 276-9836
info@airplex.co.nz www.airplex.co.nz

FITTING INSTRUCTIONS FIT1063

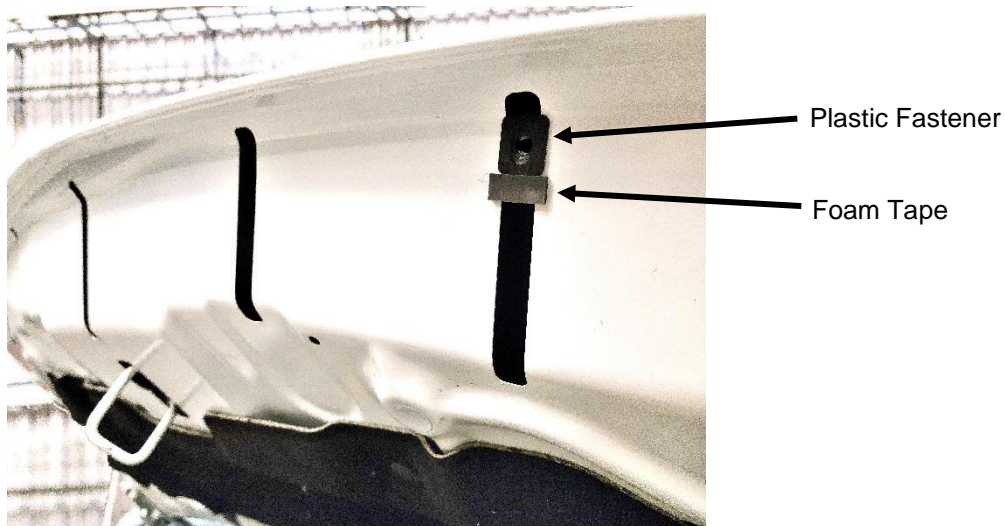
PLEASE READ INSTRUCTIONS COMPLETELY BEFORE INSTALLATION

MITSUBISHI EXPRESS

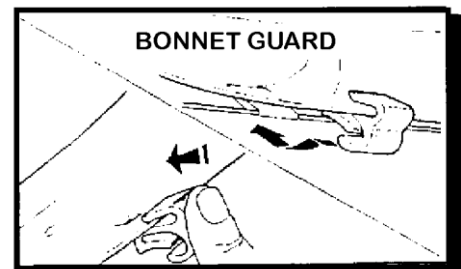
P/N U810/EXPBP
(BG616)

MADE IN NEW ZEALAND

1. Open the Bonnet and ensure that the Bonnet Protector fits snugly along the length of edge of the Bonnet.
2. Note the holes in the fastening tabs of Bonnet Protector which coincide with slot holes in the underside of Bonnet.
 - a. First insert plastic fastener through Bonnet Protector and into the underside of Bonnet.
 - b. Apply foam tape to hold plastic fastener in place.



3. Fasten together with supplied screw and washer.
4. Apply the anti-abrasive tape on edge of Bonnet where plastic fastening clip secures the Bonnet Protector near the fenders.
Use the supplied alcohol prep-pads to cleanse the area first.
5. Snap plastic clip into hole position on Bonnet Protector as shown, over the anti-abrasive tape.



Bonnet adjustment: After fitment of Bonnet Protector, it is important to check if there is sufficient room between the Bonnet and the grille. Close Bonnet slowly to determine if room is sufficient. If doubtful, it is advisable to adjust the Bonnet stops to allow more room.

***CLOSE THE BONNET BY DROPPING FROM 6" HEIGHT.
ASSIST CLOSURE ONLY BY PRESSING ON THE BONNET.
NEVER PRESS ON THE BONNET PROTECTOR!***

Wash acrylic with a mild soap and lukewarm water solution, using a clean soft cloth or sponge.