

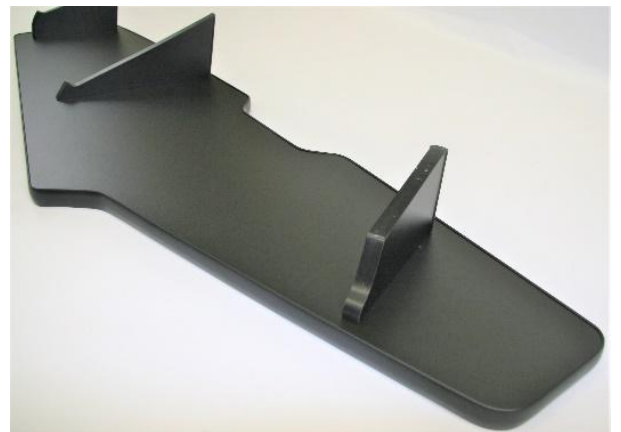
MAN TGX 2020

(With an extra cutout for a drawer)



MAN TGX truck table assembly:

1. Use tools and screws included in the box to screw table legs to the table.



MAN TGX 2020 truck table installation:

- 1) Wash the panel with the spirit liquid;
- 2) Put the table on the panel;
- 3) Mark with pencil shelf sides on the panel;
- 4) Remove the shelf and stick up the sticky strip on the panel;
- 5) If there is mat on the panel, remove it;
- 6) Put the table on the panel;

